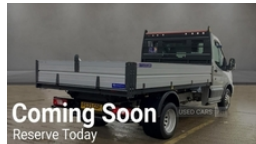


Ford Transit 2.0 EcoBlue 170ps Chassis Cab | May 2023

350 170PS TWIN WHEEL TIPPER ** € 215 VRT **



May 2023 Ford Transit Tipper 350 170ps RWD Twin Wheel, 25,000 Warranted Miles, Full Service History, Recently Fully Serviced, One Previous English Owner, Remote Locking, Elec Windows, Tidy Van.

**** Finance Available ****

€215.00 VRT Available to vat registered customers

Due in next week

Delivery available throughout the UK & Ireland

Vehicle Features

2 x 12V power outlets, 4 spoke black leather steering wheel, 8 speakers, 16" steel wheels, ABS, Audio controls mounted on steering wheel, Complete tinted glass, Configurable interior light/battery saver - 10 Min, Curve control, Day/Night inside mirror, Daytime running lights, Deadlocks, Driver seatbelt reminder, Easy clean rubber floor covering in cab, Electric windows, Electronic dynamic cornering control, Emergency brake warning, ESP + Hill start assist, Fixed rear window, Glove box lid, Header courtesy lights, Individual rear seats, Inertia reel front seatbelts + auto height adjustment, Interior trim accent pack A - Transit, Intermittent variable windshield wiper, Low roof line, Part body colour front bumper, Partial molded headliner, PAS, Quad beam headlamps, Reach and rake adjustable steering column, Rear axle Alt A - Narrow track, Rear bumper with integral step, Rear mudflaps, Recirculation heater, Remote central locking, Roof marker lights, Selectable drive mode, Side wind mitigation, Tailgate pull down handle, Unperforated cab back panel, Vehicle maintenance monitor

| | |
|----------------------|---------|
| Miles: | 25000 |
| Fuel Type: | Diesel |
| Transmission: | Manual |
| Colour: | Silver |
| Engine Size: | 1995 |
| Body Style: | Tipper |
| Reg: | FG23GDF |

Technical Specs

| DIMENSIONS | |
|-------------------------------------|----------------|
| Length: | 5572mm |
| Width: | 2052mm |
| Height: | 2220mm |
| Seats: | 3 |
| Luggage Capacity (Seats Up): | Not AvailableL |
| Gross Weight: | 3500KG |

| PERFORMANCE & ECONOMY | |
|------------------------------------|------------------|
| Fuel Consum. (Urban Cold): | 30.7MPG |
| Fuel Consum. (Extra Urban): | 55.4MPG |
| Fuel Consum. (Combined): | 42.8MPG |
| Fuel Tank Capacity: | 70L |
| Number Of Gears: | 6 SPEED |
| Top Speed: | Not AvailableMPH |
| Engine Power BHP: | 168BHP |